

**NORTH PLAINS
CONNECTOR**

A Grid United Project

**WELCOME TO THE
NORTH PLAINS
CONNECTOR
LANDOWNER MEETING**

About Grid United

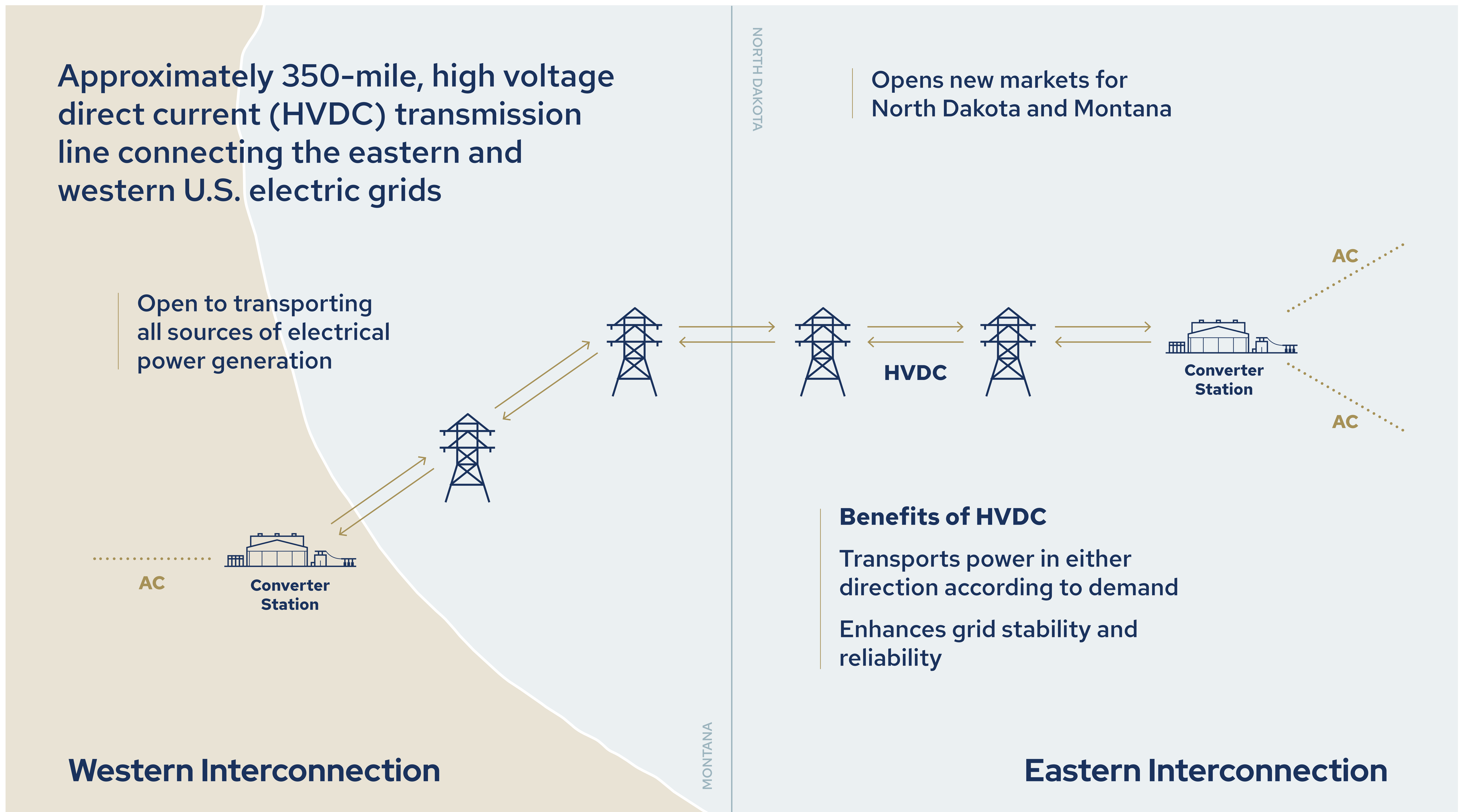


Our team is developing long-distance, utility-scale electric transmission projects that will unite the U.S. electric grid, ensuring Americans have access to **reliable power—whenever and wherever it's needed.**

Our team is comprised of experienced professionals in the energy industry who have managed, built and financed large-scale infrastructure projects across North America.

Grid United is backed by Centaurus Capital, the investment vehicle of John Arnold. Centaurus Capital has invested billions of dollars in energy projects across the U.S.

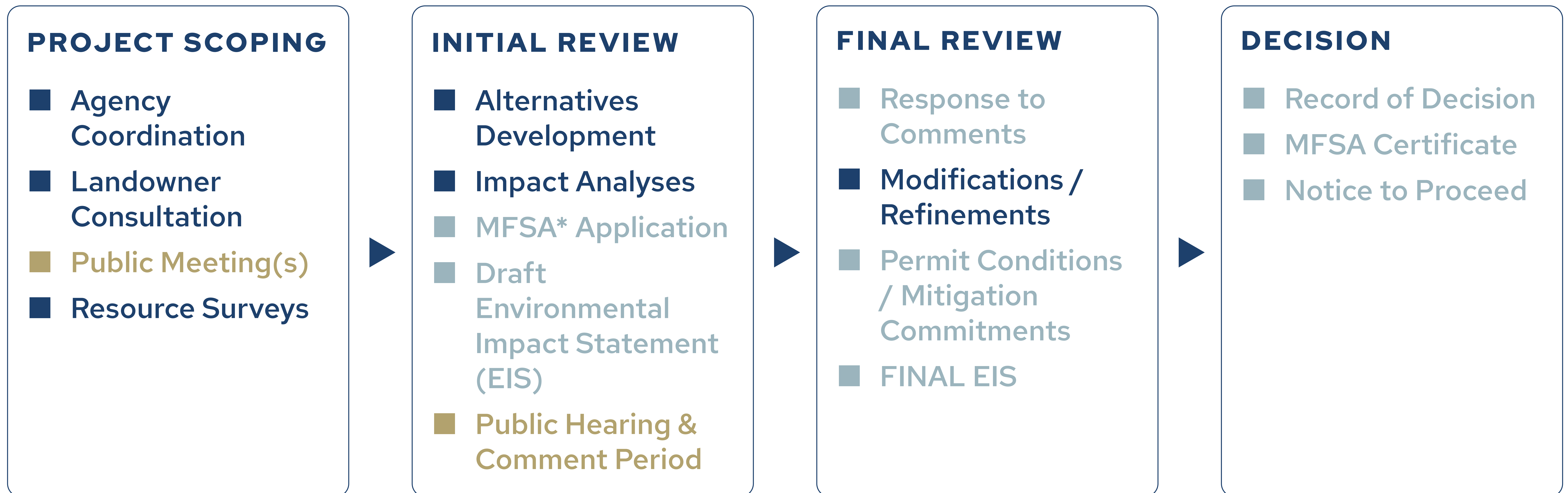
About the North Plains Connector



Siting and Environmental Review Processes

Approximately Two-Year Process

As the Applicant, Grid United will lead early project development and engage landowners and regulators for input on initial routing and design.

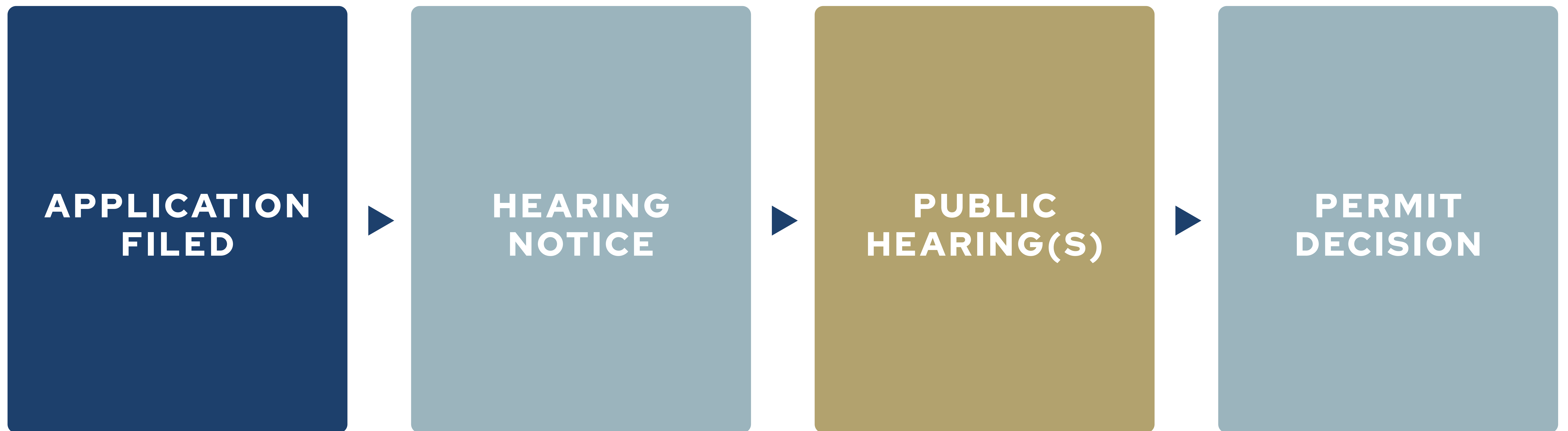


**In Montana, the North Plains Connector will be seeking a Major Facility Siting Act (MFSA) certificate from the Montana Department of Environmental Quality*

Federal and State regulators will conduct independent analyses, potentially develop new alternatives, solicit formal public comment, and make final routing decisions.

North Dakota Public Service Commission Permitting Process*

To obtain Certificate of Corridor Compatibility & Route Permit



Local zoning permits (e.g., conditional use permits) also required in some counties with separate public input opportunities.

* North Dakota has a state regulatory process - the North Plains Connector will be seeking a Corridor Certificate and Route Permit from the ND Public Service Commission

Routing Constraints

Social

Residences; businesses; farming and ranching operations; churches; land use; parks and recreational areas; cultural, historic, and tribal resources; schools; airports/airstrips; landowner and community feedback

Economic

Construction cost; constructability; taxes; employment; mitigation costs; existing infrastructure; engineering constraints; land costs

Environmental

Wetlands, floodplains, and other waters regulated by state/federal agencies; sensitive, threatened & endangered Species; wildlife habitat

Our Approach

AVOIDANCE ► **MINIMIZATION** ► **MITIGATION**

Landowner Engagement: What can I expect?

